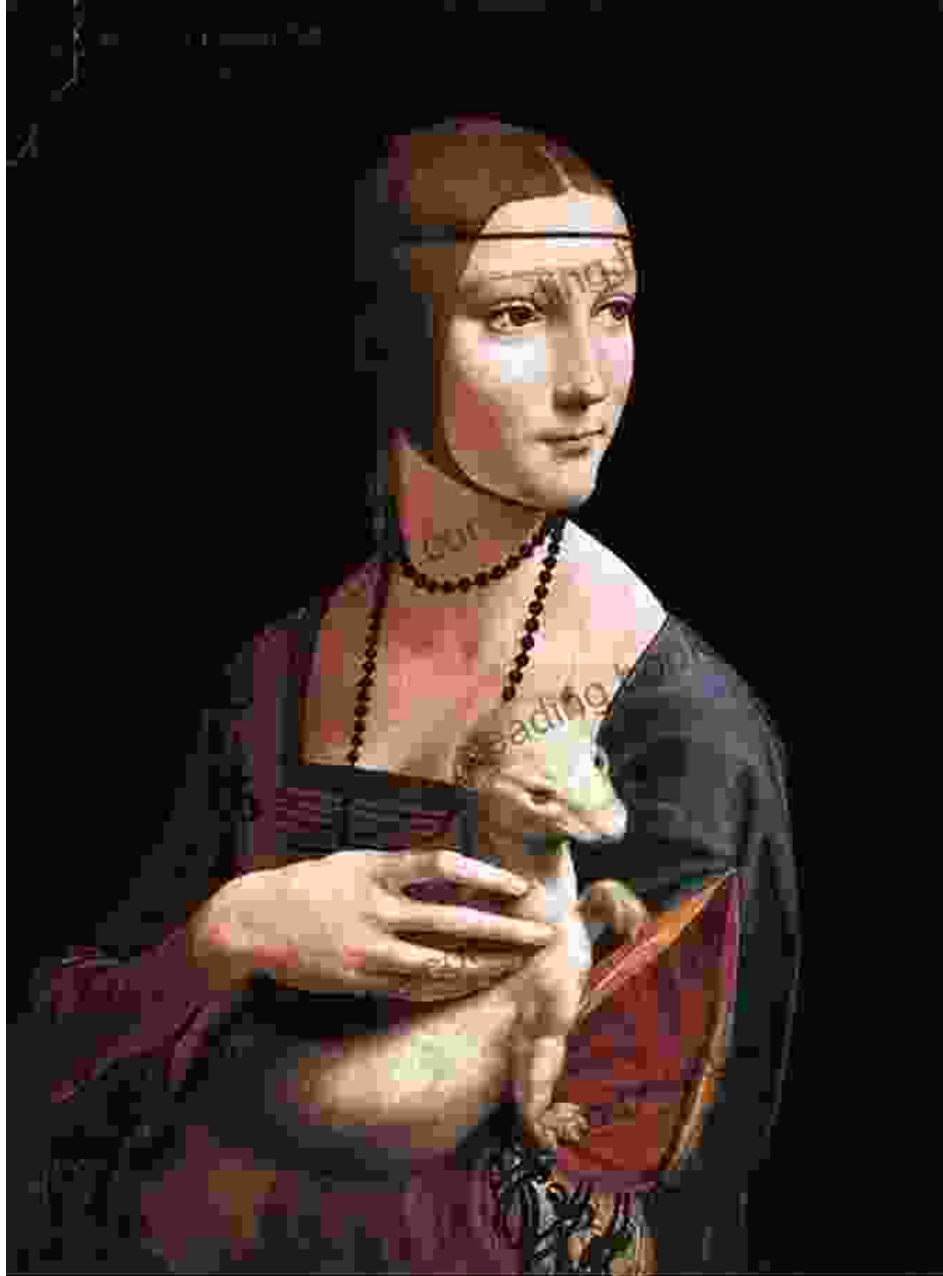


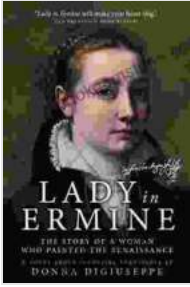
# Lady in Ermine: The Story of a Woman Who Painted the Renaissance



**Lady in Ermine — The Story of A Woman Who Painted the Renaissance: A Biographical Novel of Sofonisba**

**Anguissola** by Donna DiGiuseppe

★★★★☆ 4.4 out of 5



Language	: English
File size	: 898 KB
Text-to-Speech	: Enabled
Screen Reader	: Supported
Enhanced typesetting	: Enabled
Word Wise	: Enabled
Print length	: 311 pages
Lending	: Enabled



Cecilia Gallerani was born in Milan, Italy, in 1463. Her father was a wealthy nobleman, and her mother was a lady-in-waiting to the Duchess of Milan. Cecilia received a classical education, and she was fluent in Latin, Greek, and Italian. She was also a talented musician and singer.

In 1489, Cecilia married Ludovico Sforza, Duke of Milan. Ludovico was a powerful and ambitious ruler, and he was a patron of the arts. Cecilia became his muse and mistress, and she played an important role in the cultural life of the Milanese court.

Cecilia was also a talented artist, and she was one of the few women of her time who was able to pursue a career in art. She studied under the tutelage of Leonardo da Vinci, and she became one of his most accomplished students.

## **The Portrait of Cecilia Gallerani**

In 1490, Leonardo da Vinci painted a portrait of Cecilia Gallerani. The portrait, known as the Lady in Ermine, is one of the most famous paintings in the world. It is a beautiful and enigmatic portrait, and it has been the subject of much study and debate.

The Lady in Ermine is a half-length portrait of Cecilia Gallerani. She is shown wearing a white dress with a fur trim, and she is holding a white ermine in her right hand. The ermine is a symbol of purity and innocence, and it is often associated with women of high social status.

Cecilia's face is turned slightly away from the viewer, and her expression is both coy and seductive. Her eyes are dark and piercing, and her lips are slightly parted. She has delicate and feminine features, and she is dressed in the latest fashion.

The Lady in Ermine is a masterpiece of the Renaissance, and it is one of Leonardo da Vinci's most famous works. It is a beautiful and enigmatic portrait, and it has been the subject of much study and debate.

### **Cecilia's Later Life**

Cecilia Gallerani remained a close associate of Leonardo da Vinci throughout her life. She was a member of his circle of friends and students, and she was one of the few women who was able to collaborate with him on his work.

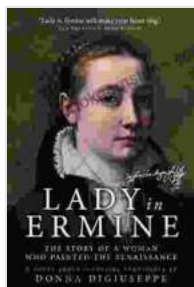
In 1502, Cecilia married Count Ludovico Carminati, a wealthy nobleman from Brescia. She had two children with Carminati, and she lived a quiet and comfortable life.

Cecilia Gallerani died in Milan in 1536. She was 73 years old. She is buried in the Church of San Maurizio al Monastero Maggiore in Milan.

### **Legacy**

Cecilia Gallerani was a remarkable woman. She was a muse, a mistress, an artist, and a friend of Leonardo da Vinci. She lived a full and complex life, and she left behind a legacy of beauty and art.

The Lady in Ermine is one of the most famous paintings in the world, and it is a testament to Cecilia Gallerani's beauty and charm. It is also a reminder of the important role that women played in the Renaissance.

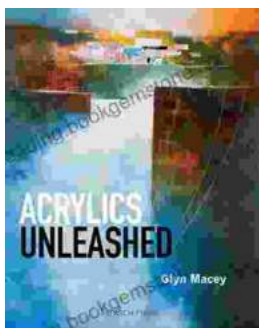


## Lady in Ermine — The Story of A Woman Who Painted the Renaissance: A Biographical Novel of Sofonisba

**Anguissola** by Donna DiGiuseppe

★★★★☆ 4.4 out of 5

Language	: English
File size	: 898 KB
Text-to-Speech	: Enabled
Screen Reader	: Supported
Enhanced typesetting	: Enabled
Word Wise	: Enabled
Print length	: 311 pages
Lending	: Enabled



## Acrylics Unleashed: Exploring the Creative Potential of Acrylics with Glyn Macey

Welcome to the vibrant world of acrylics, a medium that captivates the imagination with its versatility, expressiveness, and infinite...



## Judge This: The Unforgettable Book Covers of Chip Kidd

Chip Kidd is one of the most influential book cover designers of our time. His work is characterized by its wit, intelligence, and originality. He has designed...